

HEBRON NEWS

BULL ARM UPDATE



Hebron Project Issue 11 - Quarter 1 2016

Back to School Cash Drive

The Hebron Bull Arm Emergency Response Team (ERT) and site employees once again have stepped up for the community. For four days in August, the ERT set up turnstile collections at the end of each shift change and collected \$7500 in donations for our Back to School cash drive. The funds were split between Holy Family Elementary in Chapel Arm and Clarendville Middle School. Along with helping students who might not be able to afford basic school supplies, the funds will also help students with the cost of field trips and extracurricular activities. Thank you Hebron Team!

Elf Challenge

In November, while wearing Santa hats, our ERT participated in the 4th Annual Elf Challenge. Over four days, \$5700 in donations from Hebron employees was collected to help families in need during the Christmas season. As in previous years, Hebron partnered with the Salvation Army chapters in Clarendville, Chance Cove and Arnold's Cove as well as the Regional Action Committee on Housing (REACH) to ensure the funds were distributed where the need is greatest in the Bull Arm and surrounding areas.



Elf Challenge Cheque Presentation December 8 – back row (l-r): Jodi Wood (ERT), Glen Saunders (Shop Steward OE Local 904), Hiliary Loder (Shop Steward Teamsters Local 855), Peter Velez (ExxonMobil Canada Properties GBS Construction Manager); front row (l-r): Derek Forsey (EMT), LT. Kim Chan (SA Arnold's Cove), MAJ. Anthony LeDrew (SA Clarendville), Maisie Crowder (SA Chance Cove), Tracey Coady (REACH) and Sandra Holloway (REACH).

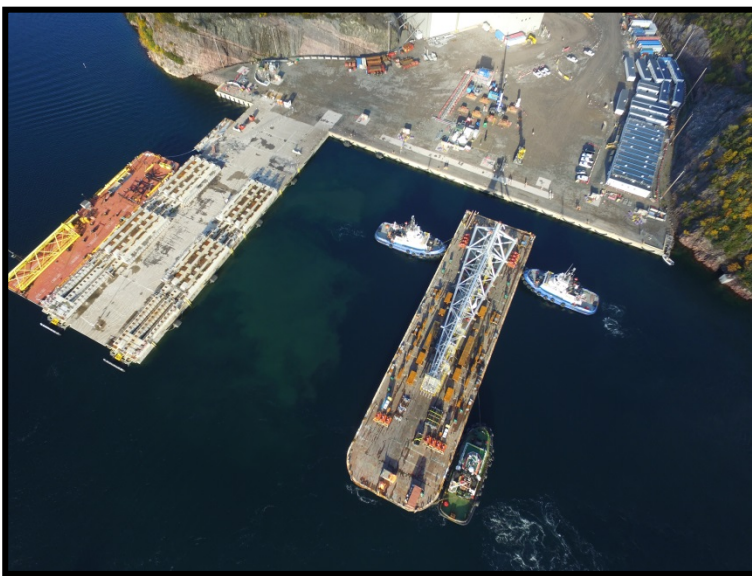
Since we launched the Elf Challenge in 2012, we have received more than \$31,000 in donations from our generous employees!!



Gravity Based Structure (GBS) girder star formwork in place for the centre shaft slip form pour



GBS centre shaft slip form pour which brought the total height of GBS structure to 121m



The flare boom arriving at the Bull Arm quay from Port-aux-Basques



The Derrick Equipment Set (DES) module arriving at Bull Arm after a 59-day voyage from Korea

Contact Us

The Hebron Information Centre is located at the TCH entrance to the Bull Arm Site (Nalcor Building). Community Relations staff are generally available Monday-Friday during regular business hours.

Telephone: 709-463-1033
Facsimile: 709-463-1034
Email: info@kkc-gbs.com

Did You Know?

The flare boom is 70 metres long and weighs 360 metric tonnes – which is equivalent to about 200 F-150 pickups.