

HEBRON NEWS

BULL ARM UPDATE



Hebron Project Issue 4 – Winter 2014

Hebron Employees at Bull Arm Give Generously

Hebron employees exceeded all expectations in raising money for the 2nd Annual Elf Challenge. The Elf Challenge is an employee organized fundraising initiative to help families in need in the Bull Arm area have a better Christmas. Our emergency response teams, administrative assistants and shop stewards all helped to collect donations and promote the fundraiser throughout site. Collectively, the team donated over \$13,000 to help families in the Bull Arm area.

We partnered with the Salvation Army in Arnold's Cove to distribute Toys'R'Us gift cards to 22 children and help 6 families with grocery gift cards. We also made donations to the Salvation Army chapters in Chance Cove and Clarenville and to the Regional Action Committee on Housing (REACH).

Ken Campbell, Construction Site Manager and shop steward representatives presented the donations to the community groups on December 16th.

Thank you to all of the Hebron employees and contractors who gave so generously. Your kindness made a difference!!



Back row, left to right: Mike Davis, KKC Labour Relations; Blair Downey, Shop Steward Carpenters Local 579; Keith Norman, Shop Steward Labour 1208; Karl Power, Shop Steward BAC #1; Ken Campbell, Construction Site Manager.

Front row, left to right: Captain LeDrew, Salvation Army – Clarenville; Lieutenant Chan, Salvation Army – Arnold's Cove, Major Fudge, Salvation Army – Chance Cove. Missing from photo – REACH representative.

First oil from Hebron is targeted for 2017.

What's New?

GRAVITY BASED STRUCTURE (GBS)

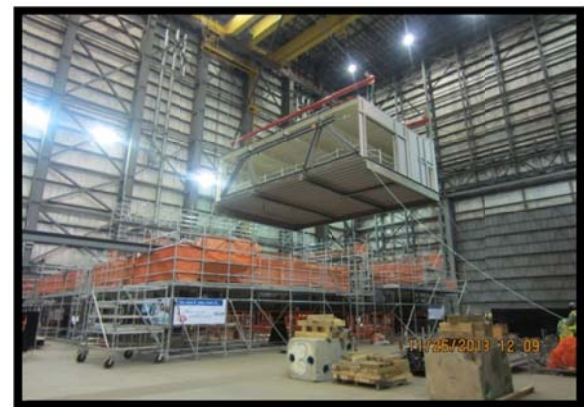
- The GBS cantilever walls were completed in December. Roofs for these sections are currently being constructed. The cantilever walls are approximately 14 metres in height and will provide extra stability for the platform when it is positioned on the ocean floor on the Grand Banks. The walls also create extra buoyancy required to float the GBS from dry dock to deep water site (DWS) later this year.
- Flooding of dry dock and tow out of the GBS to the DWS is scheduled for summer 2014. Once at DWS, construction of the GBS will continue until it reaches its total height of approximately 120 m.

TOPSIDES

- Fabrication of the steel support frame for the Living Quarters (LQ) was completed in 2013. The structural modules of the LQ are being installed on the frame in the module hall.
- The site continues to receive pre-fabricated components from Argentia and Torbay to be assembled at Bull Arm.



GBS cantilever walls (bottom perimeter walls) - December 2013



Module 1 being lifted onto Support Frame (Topsides Module Hall)

Wildlife Protection on Site

The Bull Arm Wildlife and Habitat Protection Plan is used to protect and manage wildlife and their habitat. As well, this plan ensures an effective response to encounters site personnel may have with wildlife and their habitat. One popular wildlife sighting at Bull Arm are moose. Bull Arm personnel are advised to exercise caution while driving around site and while on the commute to and from work, especially during early morning and late evening hours when visibility is compromised, as the behavior of these large animals is unpredictable.



Contact Us

The Hebron Information Centre is located at the TCH entrance to the Bull Arm Site (Nalcor Building). Community Relations staff are generally available Monday-Friday during regular business hours.

Telephone: 709-463-1033
 Facsimile: 709-463-1034
 Email: info@kkc-gbs.com

Project Workforce

As of December 31, 2013 more than 4,200 Newfoundland and Labrador residents were working on the Hebron Project in the province.